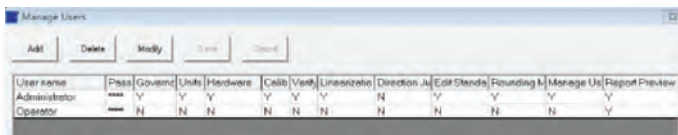




## echoTestPilot

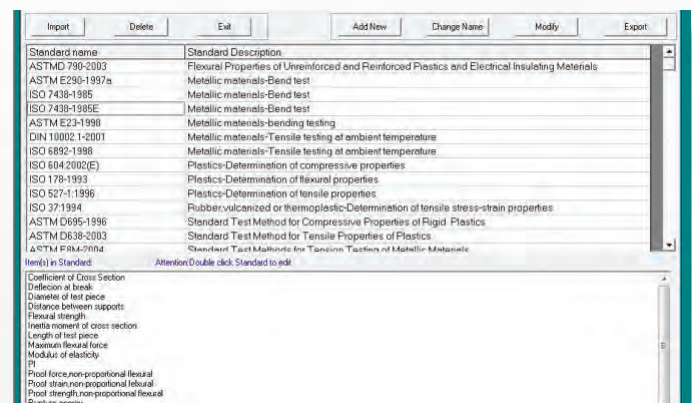
- echoTestPilot is designed to perform accurate and repeatable tests of materials, components and finished goods across a wide range of applications. It provides the simplicity and user-friendly interfaces needed for fast and efficient quality assurance and quality control testing. The software is fully compatible with echoLAB electromechanical and hydraulic universal testing machines.
- Features a large, growing host of pre-packaged test methods for easy access to meet the requirements of global test standards such as ASTM, ISO, DIN, EN, BS, and more.
- echoTestPilot software is an open architecture programming; the operator can design the testing program according to own testing requirements.
- Operator can edit the format of testing report according to the requirement, and also export to EXCEL, ACCESS files.

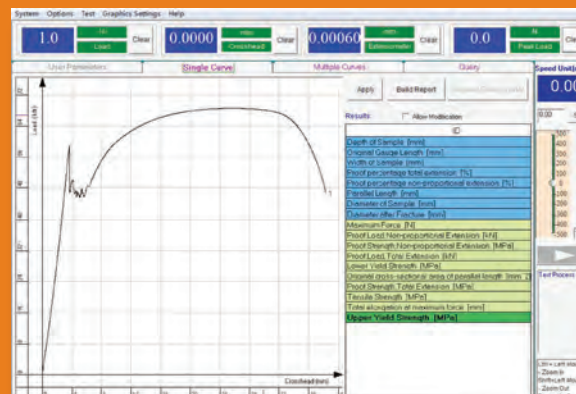
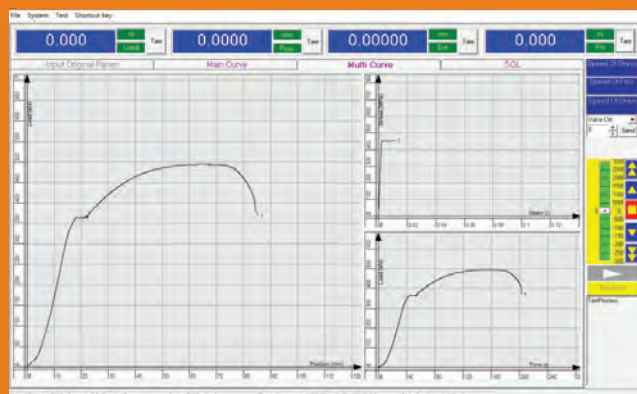
- **Management System:** The administrator can activate the functions according to different operators.



- Data logger communication function, which can collect the data from logger, such as dial gage, percent meter, etc.; it also reserves additional 6 channels for machine expansion, which can conduct the real time data collection, data displaying and data processing.
- Advanced function of data retrieval: searching by any information of the testing results, like testing date, series number, testing program, etc.
- The software displays curves/graphs of Load - Displacement, Load - Time, Load - Extension and Displacement - Time.

- echoTestPilot allows to mark interesting points on curves, zoom in and zoom out and curves traversing. During the test, curves can be displayed separately in a screen; after the test, the operator can manually define the upper yield point, lower yield point by determining the parameters.
- Operator can choose different data unit according to the requirements, the software can convert the unit of testing data and results accordingly.
- Analysis give typical test results like Young's modulus, Proof stress, Yield stress, Stress, Strain, Tensile strength, Elongation at break, Compressive strength, Bending strength and more.





**Test Project**

**Basic Parameter** | Ctrl Mode | Original Param | Result Param | Curve | Yield Method

Select project name: [Metallic materials-Tensile testing-round with EXT(ISO689)] [Delete]

Select standard: [ISO 6892:1998]

Test Type: [Normal]

Test direction: ☒ Tension ☐ Compression

Start condition: Preload [2000] N

Shape: Tensile/Compress/Bend/Cut ☒ Round ☐ Rectangle ☐ Square ☐ Pipe ☐ Abnormality ☐ Ignore(arc of pipe)

Specimen protect: ☐ Active

Sampling setup: ☐ Discontinuous sampling Interval [0]

Valve opening control: ☒ Active Initial valve [2000]

Auto Test: ☐ Auto Test Time(s): [0.6]

Shift point of extensometer: ☒ Active shift point of extensometer [1.2] mm

Fracture judgment setting: Load(KN) [60]

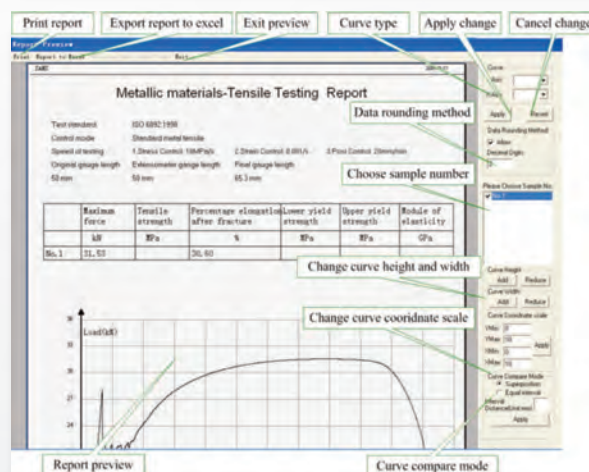
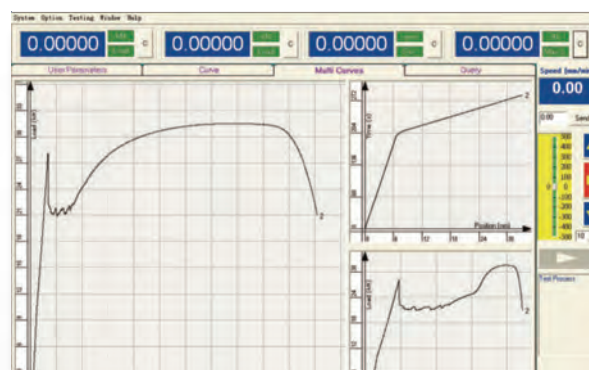
Stop Condition: ☒ Load(KN) [2000] ☐ Extension(mm) [10] ☐ Position(mm) [500] ☐ Overload(%) [0] ☒ Force drop rate(1/s) [60] ☐ Load(Negative) [0] ☐ Extension(Negative) [20] ☐ Position(Negative) [0] ☐ Valve(Negative) [50]

Auto return to initial position: ☐ Return Speed(mm/min): [0]

Sample Number: ☒ Auto ☐ Designate [1]

Backup data in real time: ☐ Active Interval time(s): [0]

[Save/Exit] [PID Setting] [Save] [Exit]



### Computer requirements

- > CPU:  $\geq 1\text{GHz}$
- > Memory:  $\geq 1\text{GB}$
- > Hard disk storage:  $\geq 10\text{GB}$
- > CD-ROM drive: Only for software installation.
- > Graphic card:  $\geq 1\text{GB}$  memory
- > Port: At least one COM port for communication.
- > If some accessories require RS232 communication with computer directly, more COM ports will be necessary.
- > Operating system: Microsoft Windows 7 or the latest.



**DEVCO S.r.l.**

Via Marzabotto, 59 20037 Paderno Dugnano (MI)  
Tel +39 0283591153 - Fax. +39 0295441300  
[www.devcosrl.it](http://www.devcosrl.it) - e-mail: [info@devcosrl.it](mailto:info@devcosrl.it)

[www.echo-lab.it](http://www.echo-lab.it)