

e-MET_{Pro}

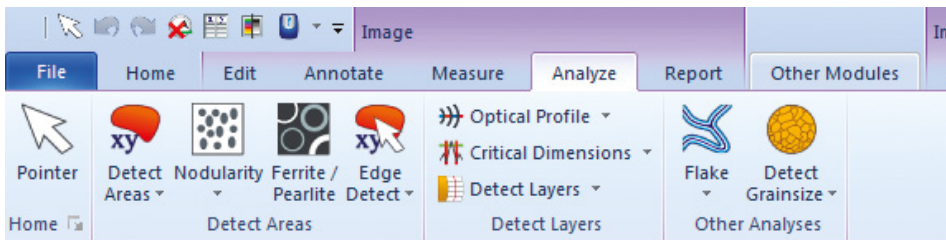
e-MET_{Pro} optical imaging software for materials science labs developed in partnership to software house PAX-it

> e-MET_{Pro} metallographic software is leading-edge digital imaging software for a wide variety of metallurgical applications, for labs set up, for quality control or quality assurance, production, inspection, failure analysis and research.

Metallographic analysis

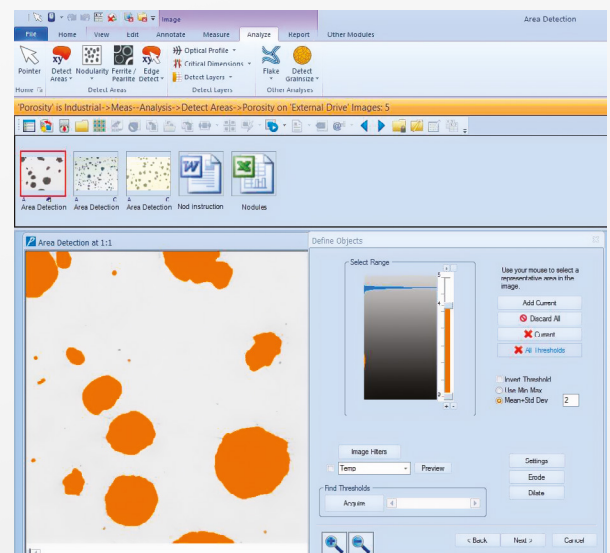
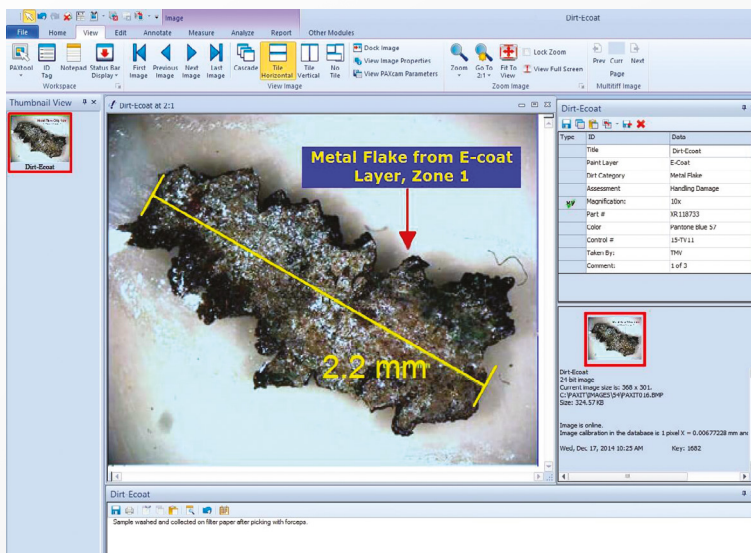
e-MET_{Pro} has many image analysis features including:

- > ASTM Grain Size Analysis
- > Plating, Coating & other Layer Thickness
- > Particle Counts and Size Distribution
- > Area Fractions
- > Porosity
- > ASTM Nodularity
- > Ferrite/Pearlite
- > ASTM Flake Size Classification
- > Primary Dendrite Arm Spacing
- > Secondary Dendrite Arm Spacing



e-MET_{Pro} will improve your workflow for analysis of graphite in cast iron, heat treat, gray iron, powder metal, copper, and many other materials.

Specific user-defined routines may be established for numerous materials including martensite, pearlite, ferrite, austenite, and many others, according to your own samples, sample prep and optical setup.



e-MET_{Pro}

Easily capture, tag, annotate and archive images in database, all in one step

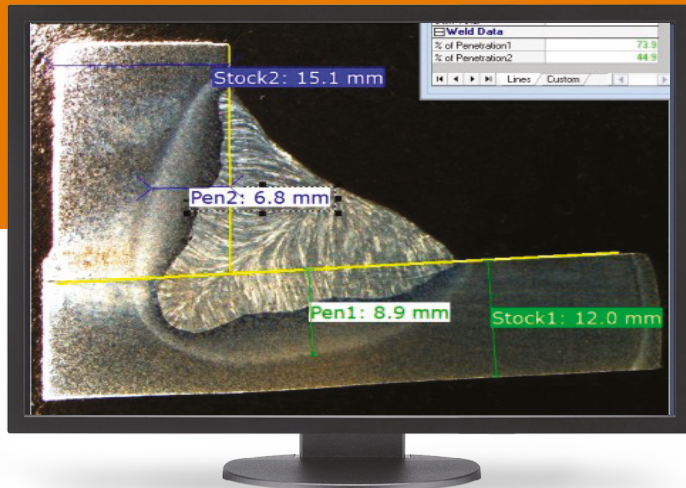
- Use image processing tools to capture those hard-to-view samples. With just a few mouse clicks, you can manually measure features including lines, angles, areas, arcs or perform automated image analysis on samples to detect and classify the features of interest. Information stored is in a searchable database, allowing quick retrieval of samples for a customer or co-worker.
- Answers come in seconds, rather than hours, as the results of your customized searches are displayed immediately on the computer screen, ready for reporting.



Save time by using e-MET_{Pro} to quickly create professional metallurgy reports

- e-MET_{Pro} makes creating reports easy with its report generation link to powerful applications such as Microsoft Word® and Excel®, allowing to incorporate your images, data, summary stats and graphs directly into customizable report templates.
- Commercial labs, contract labs, universities, and government facilities all use e-MET_{Pro} to document, analyze and archive their metallurgical samples.



e-MET_{Pro}

Welding analysis

- e-MET_{Pro} allows to measure your welding cross-sections for fillet areas, throat, leg lengths and penetration.
- Percent Penetration is calculated for you automatically, and compared to your specs for a "Pass/Fail" testing displayed on-screen. Quick, easy, accurate, and repeatable results, which can be sent to a report.



Computer requirements

- Windows 7, Windows 8/8.1 or Windows 10 (32-bit or 64-bit) operating system
- At least 4GB RAM, dual-core processor and 500 GB hard drive to store the high-resolution images and other files being managed
- Customers using e-MET_{Pro} more process-intensive features (Image Fusion, Image Stitching, Particles Analysis, Report Generation, etc.) will benefit from higher-speed, multi-core processors and more RAM
- High-resolution monitor is also recommended. Customers using e-MET_{Pro} will need USB2 or USB3 ports.

Report Generator requires Microsoft Word®, Excel® and PowerPoint®.